

# GCR16-2000-Series Cobot

## GCR16-2000-协作机器人

GCR16-2000为GCR系列高端通用型协作机器人产品，负载与工作半径的显著优势使其能够适应更广泛的应用需求，同时具有安全、易于操作、快速部署、低功耗等协作机器人特性。

GCR16-2000 is a GCR series cooperative robot product. . With significant advantages--higher payload and working range, and features of cobot such as collaborative safety, easy-to-use and energy-saving, these robots can adapt to more application needs.

### 产品特性 | PRODUCT FEATURES

- 
**具有碰撞检测、力和功率监控等16个TUV认证的安全功能，人机协作更安全**  
 With 16 TUV certified safety functions such as collision detection, force and power monitoring, which enables Human Robot Collaboration
- 
**提供完整2D/3D视觉解决方案，深度集成2D/3D视觉，无需增加额外处理器硬件**  
 Provide a complete 2D/3D vision solution, deep integration of 2D/3D vision, without additional processor hardware
- 
**负载16kg，工作半径2000mm，应用广泛，性能提升**  
 Widely Applied: Payload 16kg, Working Range 2000mm.
- 
**拖拽示教式编程，降低使用门槛，易操控**  
 Easier-to-use: With Traction Teach Programming, Less limitation to robot user.
- 
**轻量化设计，可快速部署并适应产线，更高效**  
 Lightweight & Space-saving: Can be quickly deployed and redeployed to adapt to production line changes.
- 
**机体可防静电ESD，更好地满足特定行业需求**  
 ESD Antistatic: Better meet the demands of specific industries.

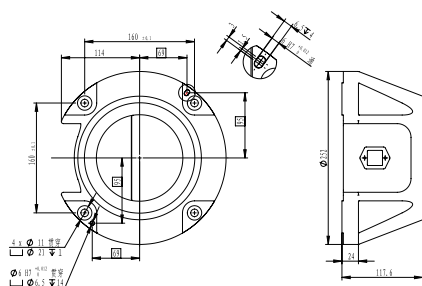
GCR16-2000



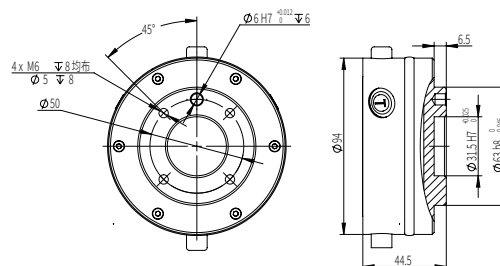
# 技术参数 | TECHNICAL PARAMETERS

最大负载 Max Payload	16kg	I/O	控制柜 Control Box I/O	16 Dig I/O, 24V, 0.5A
自由度 Degrees of Freedom	6		末端 End Joint I/O	2 Dig I/O, 24V, 0.6A
末端最大速度 Max TCP Speed	3.5m/s	电源 Power Supply		100-240VAC 47-63Hz 10A
末端最大直线速度 Max Straight-line Speed	1.8m/s	功耗 Power Consumption		典型工况约600W Typical Power Consumption 600W
有效工作半径 Reach	2000mm	机器人外形尺寸 Robot Dimensions		2300x388x205mm
重复定位精度 Repeatability	±0.05mm	控制柜尺寸 Control Box Size		500x388x275mm
关节 Joint	运动范围 Range	安装方式 Installation		置地式、倒挂式、悬臂式 Installed in any Direction
J6	±360°	环境温度 Ambient Temperature Range		-10°C~50°C
J5	±360°	存储温度 Storage Temperature Range		-40°C~55°C
J4	±360°	IP等级 IP Class		IP54/IP65
J3	±360°	机器人包装尺寸 Robot Package Size		1465x516x472mm
J2	±360°	净重/毛重 Net/Gross Weight		58kg/65kg
J1	±360°	控制系统包装 Control System Package Size		480x395x376mm
工具接口 Tool Interface	GB/T 14468.1-50-4-M6 (eqv ISO 9409-1)	重量 Weight		20kg
通讯方式 Communication Protocol	TCP/IP, MODBUS/TCP, Profinet, EtherCAT, CAN, 485支持多种通讯协议拓展 Support Various Communication Protocols Expansion			

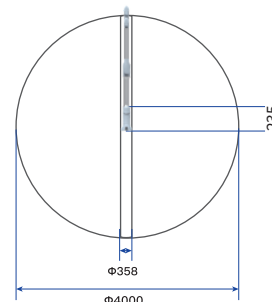
## 底座法兰 | BASE FLANGE



## 工具法兰 | TOOL FLANGE



## 工作空间 | WORKSPACE



## 负载曲线 | PAYLOAD DIAGRAM

