

# GCR20 -1400-Series Cobot

## GCR20-1400-协作机器人

GCR20-1400为GCR系列高端通用型协作机器人产品，负载与工作半径的显著优势使其能够适应更广泛的应用需求，同时具有安全、易于操作、快速部署、低功耗等协作机器人特性。

GCR20-1400 is a GCR series cooperative robot product. . With significant advantages--higher payload and working range, and features of cobot such as collaborative safety, easy-to-use and energy-saving, these robots can adapt to more application needs.

### 产品特性 | PRODUCT FEATURES

- 

**具有碰撞检测、力和功率监控等16个TUV认证的安全功能，人机协作更安全**  
With 16 TUV certified safety functions such as collision detection, force and power monitoring, which enables Human Robot Collaboration
- 

**提供完整2D/3D视觉解决方案，深度集成2D/3D视觉，无需增加额外处理器硬件**  
Provide a complete 2D/3D vision solution, deep integration of 2D/3D vision, without additional processor hardware
- 

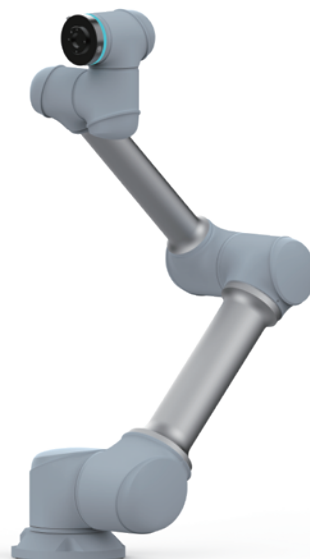
**负载20kg，工作半径1400mm，应用广泛，性能提升**  
Widely Applied: Payload 20kg, Working Range 1400mm
- 

**拖拽示教式编程，降低使用门槛，易操控**  
Easier-to-use: With Traction Teach Programming, Less limitation to robot user.
- 

**轻量化设计，可快速部署并适应产线，更高效**  
Lightweight & Space-saving: Can be quickly deployed and redeployed to adapt to production line changes.
- 

**机体可防静电ESD，更好地满足特定行业需求**  
ESD Antistatic: Better meet the demands of specific industries.

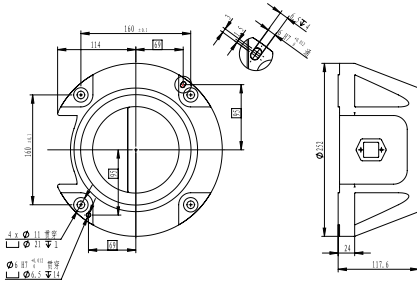
GCR20-1400



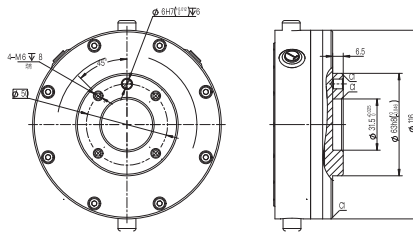
# 技术参数 | TECHNICAL PARAMETERS

最大负载 Max Payload	20kg	I/O	控制柜 Control Box I/O	16 Dig I/O, 24V, 0.5A
自由度 Degrees of Freedom	6	末端 End Joint I/O	2 Dig I/O, 24V, 0.6A	
末端最大速度 Max TCP Speed	2.2m/s	电源 Power Supply	220-240VAC 47-63Hz10A 100-200VAC 47-63Hz 16A	
末端最大直线速度 Max Straight-line Speed	1.5m/s	功耗 Power Consumption	典型工况约600W Typical Power Consumption 600W	
有效工作半径 Reach	1400mm	机器人外形尺寸 Robot Dimensions	1695x388x205mm	
重复定位精度 Repeatability	±0.05mm	控制柜尺寸 Control Box Size	410x306x292mm	
关节 Joint	运动范围 Range	最大速度 Max Speed	安装方式 Installation	置地式、倒挂式、悬臂式 Installed in any Direction
J6	±360°	225°/s	环境温度 Ambient Temperature Range	-10°C~50°C
J5	±360°	225°/s	存储温度 Storage Temperature Range	-40°C~55°C
J4	±360°	225°/s	IP等级 IP Class	IP54/IP65
J3	±360°	180°/s	机器人包装尺寸 Robot Package Size	1060x500x600mm
J2	±360°	120°/s	净重/毛重 Net/Gross Weight	66kg/75kg
J1	±360°	120°/s	控制系统包装 Control System Package Size	480x395x376mm
工具接口 Tool Interface	GB/T 14468.1-50-4-M6 (eqv ISO 9409-1)	重量 Weight	20kg	
通讯方式 Communication Protocol	TCP/IP, MODBUS/TCP, Profinet, EtherCAT, CAN, 485支持多种通讯协议拓展 Support Various Communication Protocols Expansion			

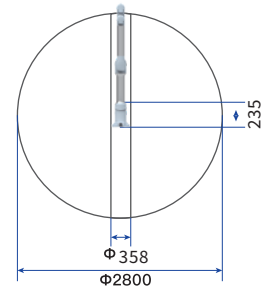
## 底座法兰 | BASE FLANGE



## 工具法兰 | TOOL FLANGE



## 工作空间 | WORKSPACE



## 负载曲线 | PAYLOAD DIAGRAM

