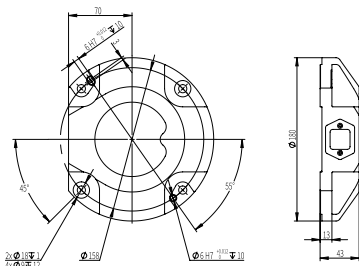


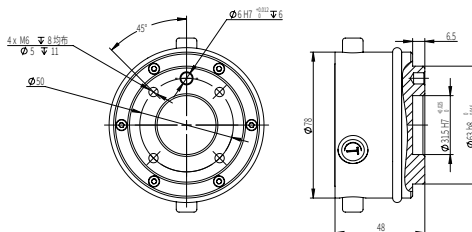
## 技术参数 | TECHNICAL PARAMETERS

|                                  |  |                                    |   |
|----------------------------------|--|------------------------------------|---|
| 最大负载 Max Payload                 | 7kg  | 控制柜 Control Box I/O                | 16 Dig I/O, 24V, 0.5A                       |
| 自由度 Degrees of Freedom           | 6  | I/O 末端 End Joint I/O               | 2 Dig I/O, 24V, 0.6A                        |
| 末端最大速度 Max TCP Speed             | 3.6m/s   | 电源 Power Supply                    | 100-240VAC 47-63Hz 10A                      |
| 末端最大直线速度 Max Straight-line Speed | 1.5m/s   | 功耗 Power Consumption               | 典型工况约200W<br>Typical Power Consumption 200W |
| 有效工作半径 Reach                     | 917mm  | 机器人外形尺寸 Robot Dimensions           | 1100x330x200mm                              |
| 重复定位精度 Repeatability             | ±0.02mm  | 控制柜尺寸 Control Box Size             | 410x306x292mm                               |
| 关节 Joint                         | 运动范围 Range   | 安装方式 Installation                  | 置地式、倒挂式、悬臂式<br>Installed in any Direction   |
| J6                               | ±360°  | 环境温度 Ambient Temperature Range     | -10°C~50°C                                  |
| J5                               | ±360°  | 存储温度 Storage Temperature Range     | -40°C~55°C                                  |
| J4                               | ±360°  | IP等级 IP Class                      | IP54/IP65                                   |
| J3                               | ±360°  | 机器人包装尺寸 Robot Package Size         | 698x588x450mm                               |
| J2                               | ±360°  | 净重/毛重 Net/Gross Weight             | 22kg/30 kg                                  |
| J1                               | ±360°  | 控制系统包装 Control System Package Size | 480x395x376mm                               |
| 工具接口 Tool Interface              | GB/T 14468.1-50-4-M6<br>(eqv ISO 9409-1)   | 重量 Weight                          | 20kg  |
| 通讯方式 Communication Protocol      | TCP/IP, MODBUS/TCP, Profinet, EtherCAT, CAN, 485 支持多种通讯协议拓展<br>Support Various Communication Protocols Expansion |                                    |   |

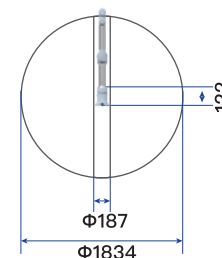
### 底座法兰 | BASE FLANGE



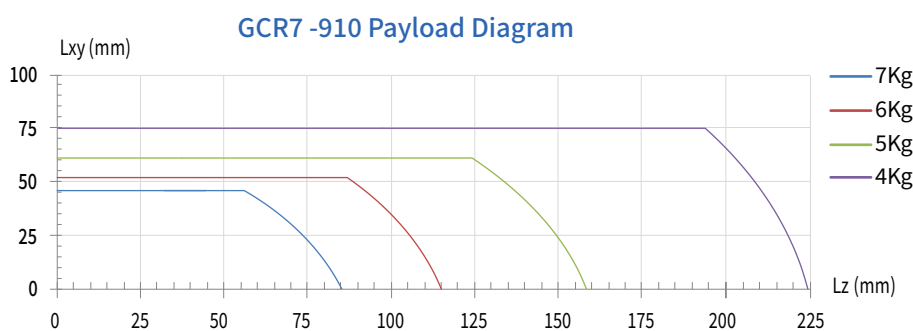
### 工具法兰 | TOOL FLANGE



### 工作空间 | WORKSPACE



### 负载曲线 | PAYLOAD DIAGRAM



# GCR12-1300-Series Cobot

## GCR12-1300-协作机器人

GCR12-1300为GCR系列高端通用型协作机器人产品，负载与工作半径的显著优势使其能够适应更广泛的应用需求，同时具有安全、易于操作、快速部署、低功耗等协作机器人特性。

GCR12-1300 is a GCR series cooperative robot product. . With significant advantages--higher payload and working range, and features of cobot such as collaborative safety, easy-to-use and energy-saving, these robots can adapt to more application needs.

### 产品特性 | PRODUCT FEATURES

- 
**具有碰撞检测、力和功率监控等16个TUV 认证的安全功能，人机协作更安全**  
 With 16 TUV certified safety functions such as colision detectlon, force and power monitoring,which enables Human Robot Colaboration
- 
**提供完整2D/3D视觉解决方案,深度集成2D/3D视觉，无需增加额外处理器硬件**  
 Provido a completo 2D/3D vision solution, doop integration of 2D/3D vision, without additional proccessor hardware
- 
**负载12kg, 工作半径1300mm, 应用广泛, 性能提升**  
 Widely Applied: Payload 12kg, Working Range 1300mm.
- 
**拖拽示教式编程, 降低使用门槛, 易操控**  
 Easier-to-use: With Traction Teach Programming, Less limitation to robot user.
- 
**轻量化设计, 可快速部署并适应产线, 更高效**  
 Lightweight & Space-saving: Can be quickly deployed and redeployed to adapt to production line changes.
- 
**机体可防静电ESD, 更好地满足特定行业需求**  
 ESD Antistatic: Better meet the demands of specific industries.

GCR12-1300

