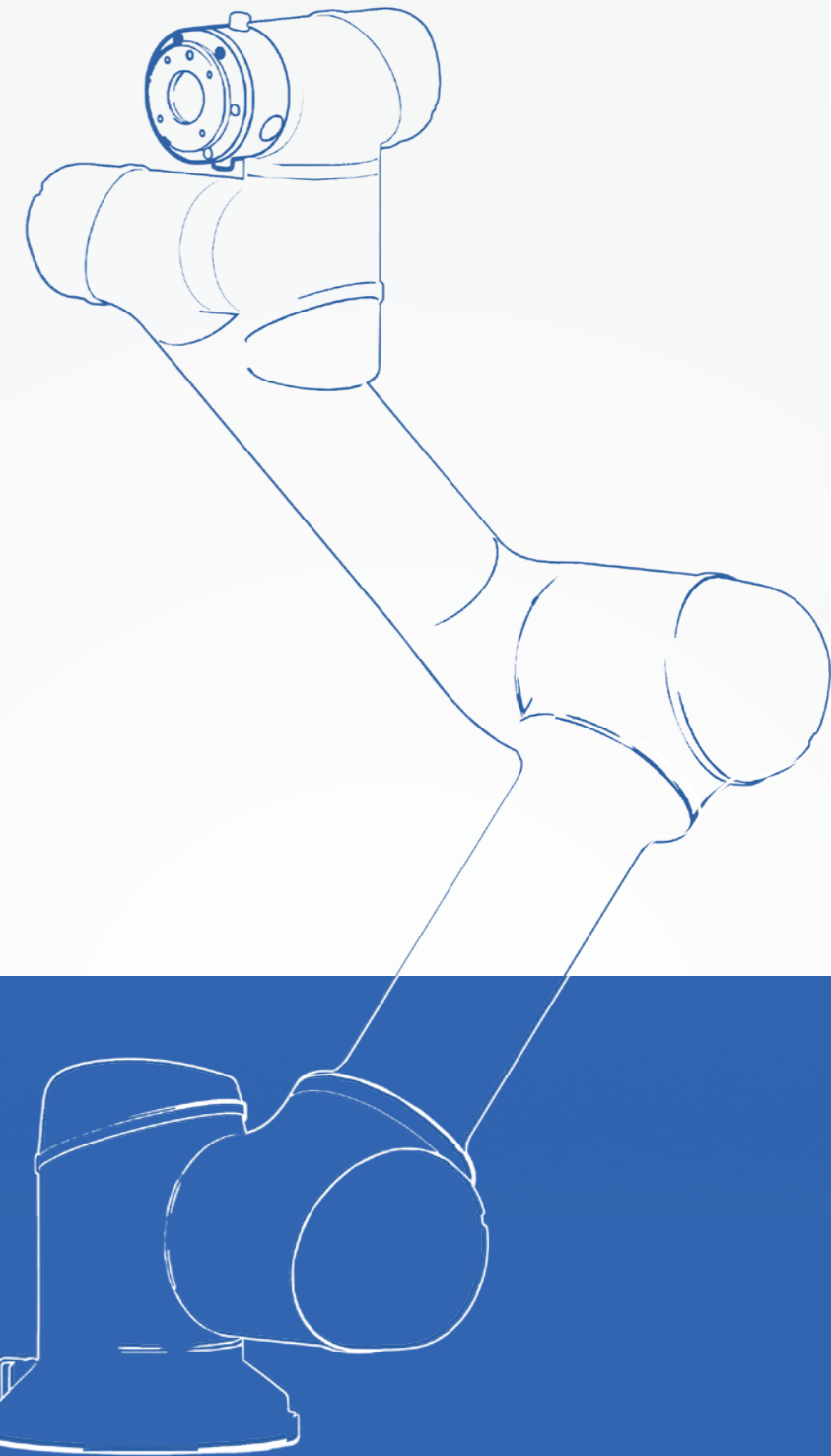




多可GCR系列 防爆协作机器人



GCR系列防爆协作机器人

GCR Series Explosion Proof Cobot

Explosion Proof

防爆等级

机械臂: Ex db eb pxb IIC T4 Gb/
Ex pxb tb IIIC T130°C Db
Explosion Proof: Ex db eb pxb IIC T4 Gb/Ex pxb tb IIC T130°C Db

Multiple Explosion-Proof Design

多重防爆

多重防爆设计,可在50°C的环境温度下正常工作
Multiple explosion-proof design, it can work normally at an ambient temperature of 50 °C.

Replace High-Temperature Operation

代替高危作业

可代替一线高危作业人员在各类易燃易爆、有毒有害、高温高压等石油、天然气、化工环境中工作
Replace the front-line high-risk operators in all kinds of flammable, explosive, toxic, harmful, high-temperature and high-pressure oil, natural gas and chemical environments, and carry out work all day long.

Smart

智能非凡

可配置各类智能感知设备,对现场环境数据进行实时采集与智能分析,全面提升企业数字化运维能力
Can configured various intelligent sensing devices to conduct real-time collection and intelligent analysis of on-site environmental data, improve the digital operation and maintenance ability comprehensively of enterprises.

Wide Application

应用广泛

负载10-25 kg,工作半径1300mm-2000mm
应用更广泛
Widely Applied: Payload 10kg-25kg, Working Range 1300mm-2000mm.

Easier-to-use

运维便捷

拖拽示教式编程,降低使用门槛,易操控
Easier-to-use: With Traction Teach Programming, Less limitation to robot user.

Light and Handy

智轻致巧

轻量化设计,可快速部署并适应产线,更高效
Lightweight & Space-saving: Can be quickly deployed and redeployed to adapt to production line changes

此系列包括GCR10-1300-Ex、GCR16-2000-Ex、GCR20-1400-Ex、GCR25-1800-Ex四款防爆协作机器人产品,作为一线高危人员的保护墙,可代替一线高危作业人员在各类易燃易爆、有毒有害、高温高压等石油、天然气、化工环境中工作。此外,负载与工作半径的显著优势使其能够适应更广泛的应用需求,同时具有安全、易于操作、快速部署、低功耗等协作机器人特性。

This series includes three explosion-proof collaborative robot products:GCR10-1300-Ex、GCR16-2000-Ex、GCR20-1400-Ex、GCR25-1800-Ex. As a protective wall for front-line high-risk personnel, it can replace front-line high-risk operators to work in various flammable, explosive, toxic, harmful, high-temperature and high-pressure oil, natural gas and chemical environments.The significant advantages of load handling and working radius makes it suitable for a wider range of application requirements. These models are also equipped characteristics such as safety, easy operation, quick deployment, and low power consumption.

控制柜

Control Box

重量 Weight	80kg
尺寸 Size	1300x600x500mm
电源输入 Power Supply	200~240VAC, 47~63HZ, 16A
额定功率 Rated Power	1000W
本体线缆长度 Cable Length	12 m (其他规格请详询经销商)
通讯方式 Communication Mode	TCP/IP, Modbus/TCP, CAN, RS485, Profinet
系统I/O Communication I/O	8DI, 8DO (PNP, 24V/MAX500mA)
拓展I/O Expand I/O	8DI, 8DO (PNP, 24V/MAX500mA)
防护等级 IP Class	IP65
工作温度 Operation Temperature	-10°C-50°C
储存温度 Storage Temperature	-40°C-55°C
湿度 Humidity	20%-90%RH
防爆等级 Explosion Proof	Ex db eb pxb IICT4Gb/Ex pxb tb IIIC T130°C Db
气源种类 Type of Gas Source	洁净空气



防爆控制柜
Explosion Proof Control Box

技术参数

Technical Parameters

最大负载 Max Payload	
自由度 Degrees of Freedom	
末端最大速度 Max TCP Speed	
末端最大直线速度 Max Straight-line Speed	
有效工作半径 Reach	
重复定位精度 Repeatability	
关节 Joint	运动范围 Range
J6	±360°
J5	±360°
J4	±360°
J3	±160°
J2	±360°
J1	±360°
工具接口 Tool Interface	
气源种类 Type of Gas Source	
防爆等级 Explosion Proof	
安装方式 Installation	
IP等级 IP Class	
环境温度 Ambient Temperature Range	
储存温度 Storage Temperature Range	
机器人外形尺寸 Robot Dimensions	
机器人包装尺寸 Robot Package Size	
重量 Weight	

	GCR10-1300-Ex	GCR16-2000-Ex	GCR20-1400-Ex	GCR25-1800-Ex
最大负载 Max Payload	10kg	16kg	20kg	25kg
自由度 Degrees of Freedom	6	6	6	6
末端最大速度 Max TCP Speed	3.8m/s	3.5m/s	2.2m/s	2.5m/s
末端最大直线速度 Max Straight-line Speed	1.5m/s	1.8m/s	1.5m/s	1.5m/s
有效工作半径 Reach	1300mm	2000mm	1400mm	1800mm
重复定位精度 Repeatability	±0.03mm	±0.05mm	±0.05mm	±0.05mm
关节 Joint	最大速度 Max Speed			
J6	225°/s	225°/s	225°/s	225°/s
J5	225°/s	225°/s	225°/s	225°/s
J4	225°/s	225°/s	225°/s	225°/s
J3	225°/s	180°/s	180°/s	150°/s
J2	180°/s	120°/s	120°/s	100°/s
J1	180°/s	120°/s	120°/s	120°/s
工具接口 Tool Interface	GB/T 14468.1-50-4-M6 (eqv ISO 9409-1)			
气源种类 Type of Gas Source	洁净空气	洁净空气	洁净空气	洁净空气
防爆等级 Explosion Proof	Ex db eb pxb IIC T4 Gb/Ex pxb tb IIIC T130°C Db			
安装方式 Installation	置地式、倒挂式、悬臂式 Installed in any Direction			置地式 Land tyoe
IP等级 IP Class	IP65	IP65	IP65	IP65
环境温度 Ambient Temperature Range	-10°C-50°C	-10°C-50°C	-10°C-50°C	-10°C-50°C
储存温度 Storage Temperature Range	-40°C-55°C	-40°C-55°C	-40°C-55°C	-40°C-55°C
机器人外形尺寸 Robot Dimensions	1512x388x205mm	2300x388x205mm	1695x388x205mm	2300x440x252mm
机器人包装尺寸 Robot Package Size	952x509x516mm	1465x516x472mm	1060x500x600mm	1295x540x515mm
重量 Weight	37.8kg	60kg	66kg	61.6kg



示教器

Teach Pedant

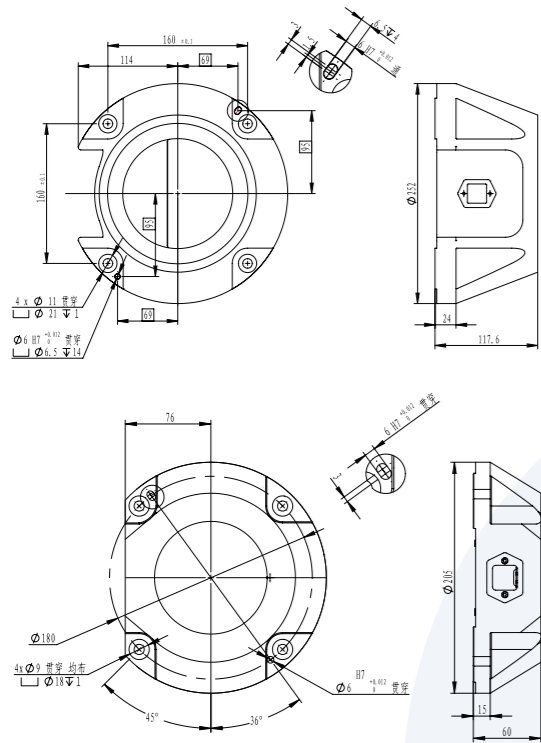
尺寸 Size	248x172x22mm
操作系统 OS	Android 10.0
显示分辨率 Resolving Power	1280*800
VGA显示尺寸 VGA Size	10.1 16:10
防护等级 IP Class	IP68
重量 Weight	1095g
电源 Power	AC100V~240V, 50Hz/60Hz 输出DC 5V/3A
DC接口 DC Ports	DC 5V-3A φ 3.5mm



示教器
Teach Pendant

底座法兰

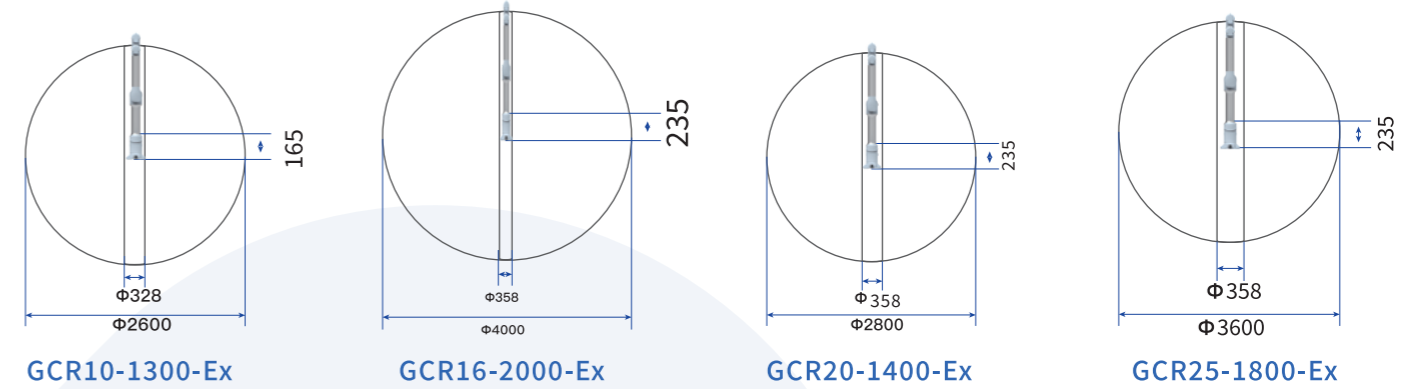
Base Flange



GCR16-2000-Ex
GCR20-1400-Ex
GCR25-1800-Ex

工作空间

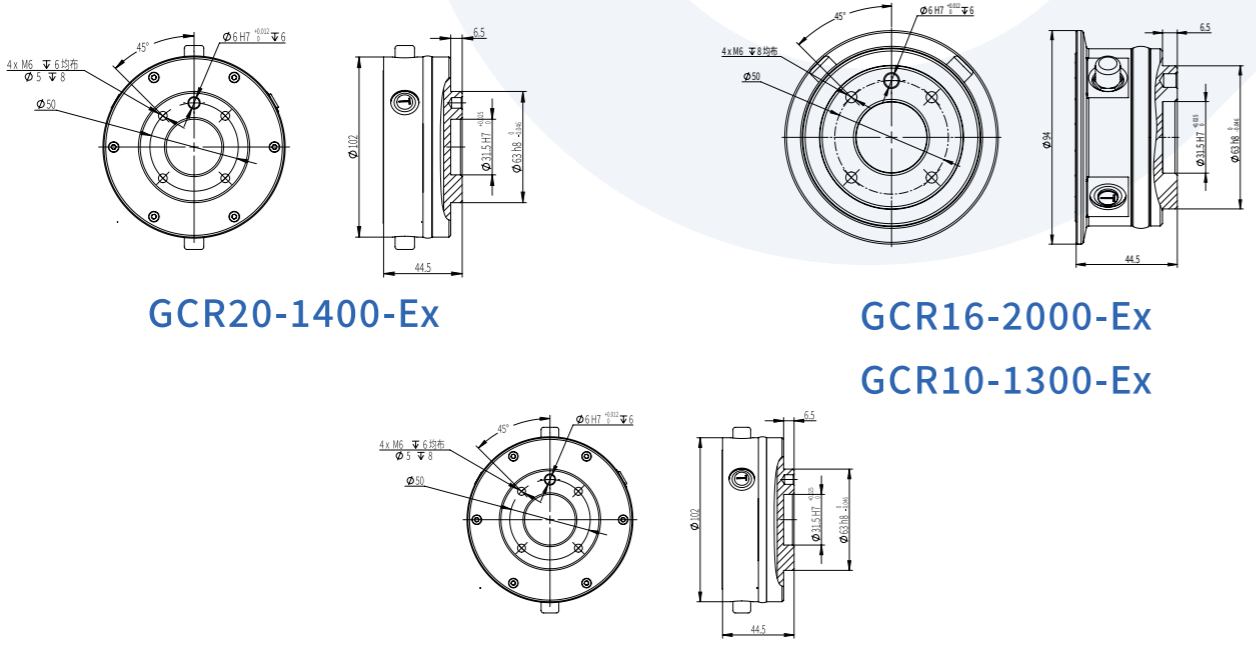
WorkSpace



GCR10-1300-Ex

工具法兰

Tool Flange



GCR20-1400-Ex

GCR16-2000-Ex
GCR10-1300-Ex

GCR25-1800-Ex

负载曲线

Payload Diagram

